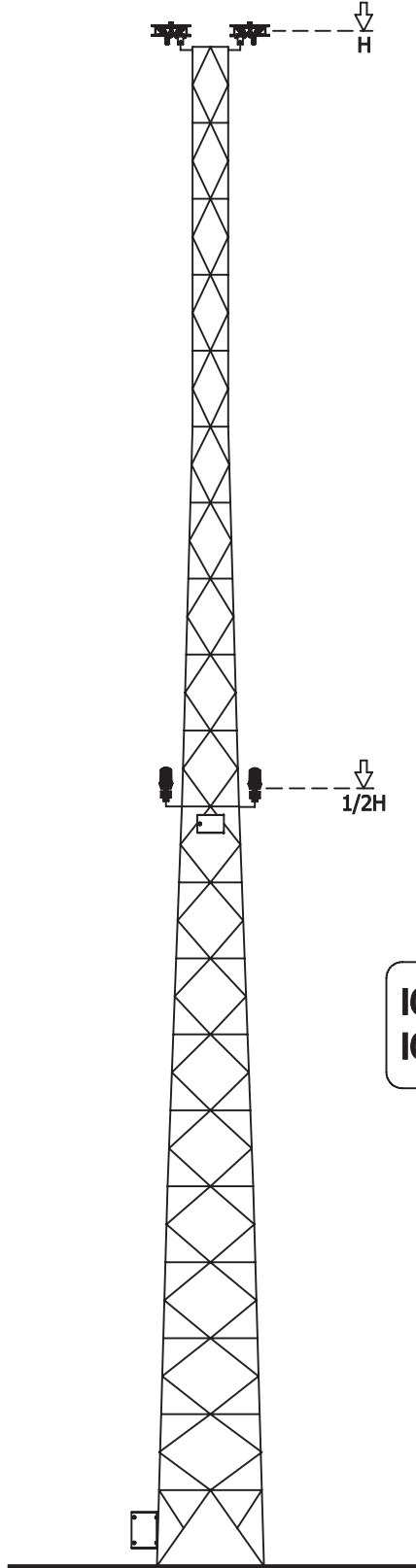


# AIRCRAFT WARNING LIGHT SYSTEMS

## MEDIUM INTENSITY SYSTEMS

**GUIS-03ML (AC-DC Supplied,1 Double,2 Single Warning Lamp+Control Box, Connector Box)**



**ICAO Type B (Medium Int.)**  
**ICAO Type B (Low Int.)**

# AIRCRAFT WARNING LIGHT SYSTEMS

## MEDIUM INTENSITY SYSTEMS

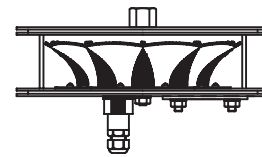


### GUIS-03ML (AC-DC Supplied,1 Double,2 Single Warning Lamp+Control Box, Connector Box)

**INTRODUCTION:** GEMTA Aircraft Warning Light Systems are designed and produced to warn against dangerous obstacles for aircraft. System consists of; 2 Single Armatures (Medium Intensity), "Backup" and "Blink" mode. Main and Stand by. 2 Single Armatures (Low Intensity), "Non-Backup" and "Steady" mode. 1 Control Box and 1 Connector Box. System operates under the control of a photocell relay. System turns the lights on when the ambience gets dark and turns off when the ambience gets lighten. In the control box, by the "manual" option of the photocell relay, system operates day/night continuously. Functionality tests must be conducted on manual mode at first installation.

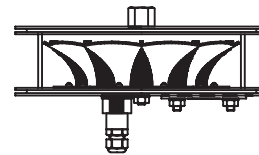
**1-Backup System:** While one of the Lamp is working, the other Lamp waits as a spare.(figure-1) If active Lamp fails, it sends a failure warning to the backup Lamp and turns it on after 4 second.

**2-Failure Warning System:** With the help of failure warning, user is able to control the operation of system from a distant place. User installs the system by connecting failure outputs (COM:Common - NO:Normally Open) to sounded or lighted warning device. In case of any failure, lamps send warning to failure warning unit inside the control box. By means of Failure Warning System, problem is solved in a short time.



Lamp-1  
(Active)

Figure-1



Lamp-2  
(Backup)

#### TECHNICAL SPECIFICATIONS:

1-Supply Voltage (±10%)	: 24V DC/48V DC & 220V AC / 230V AC
2-Use Type	: Night
3-Lamp Type	: LED (Transparent Light)
4-Light Intensity	: Medium Intensity: >2000cd Low Intensity: >32cd
5-M.t.b.f	: 100.000 hours
6-Operating Mode	: ICAO Type B: Backup - Blink ICAO Type C: Backup - Steady
7-Average Power Consumption	: 70W (220/230V AC) 55W (24/48V DC)
8-Operating Temperature	: -30°C / 55°C
9-Failure Warning Contacts	: Exists

#### MECHANICAL SPECIFICATIONS:

##### Medium Intensity Armature;

1-Material	: Anodized Aluminium
2-Lamp Protective Cover	: Polycarbonate
3-Bolts, Nuts, Washers	: Stainless Steel (inox)
4-Protection Class	: IP-66
5-Dimensions	: See figure-2
6-Weight	: 4 kg

##### Low Intensity Armature;

1-Material	: Anodized Aluminium
2-Paint	: Ral-1028 Electrostatic Polyester
3-Lamp Protective Cover	: Polycarbonate
4-Bolts, Nuts, Washers	: Stainless Steel (inox)
5-Protection Class	: IP-65
6-Dimensions	: See figure-3
7-Weight	: 2 kg

##### Control Box;

1-Material	: Sheet Metal (ST-37)
2-Under Painting Surfacing	: Electro Galvanized
3-Paint	: Ral-7035 Electrostatic Polyester
4-Bolts, Nuts, Washers	: Stainless Steel (inox)
5-Protection Class	: IP-65
6-Dimensions	: See figure-4,5
7-Control Box Weight	: 10 kg
8-Connector Box Weight	: 4 kg

#### PACKAGE DETAILS:

##### Armature Package;

1-Package Dimensions	: 450x360x360mm
2-Weight	: 13 kg
3-Content	: Armatures,Manual Users
4-Max. Number of Stock	: 5 pcs / Package

##### Control and Connector Box Package;

1-Package Dimensions	: 340x720x180mm
2-Weight	: 16 kg
3-Content	: Control and connector box
4-Max. Number of Stock	: 5 pcs / package

# AIRCRAFT WARNING LIGHT SYSTEMS

## MEDIUM INTENSITY SYSTEMS

**GUIS-03ML (AC-DC Supplied, 1 Double, 2 Single Warning Lamp+Control Box, Connector Box)**

Figure-2

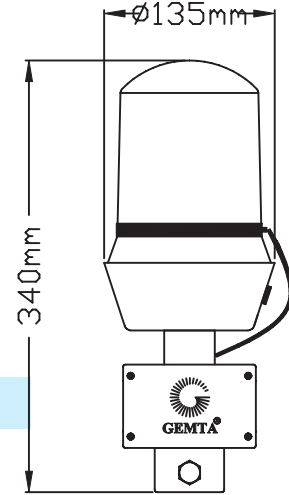
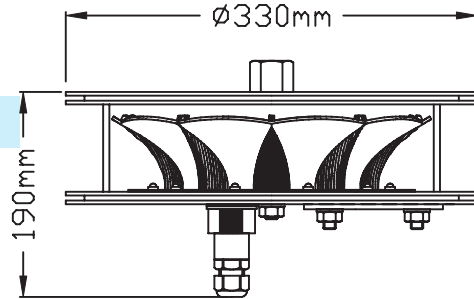


Figure-3

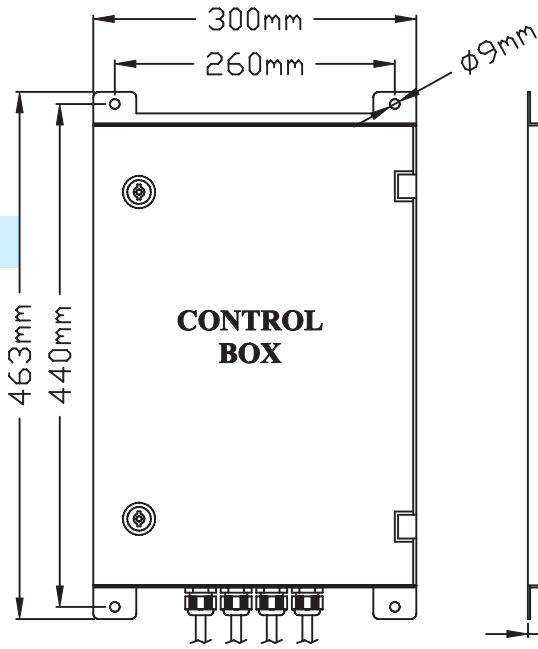


Figure-4

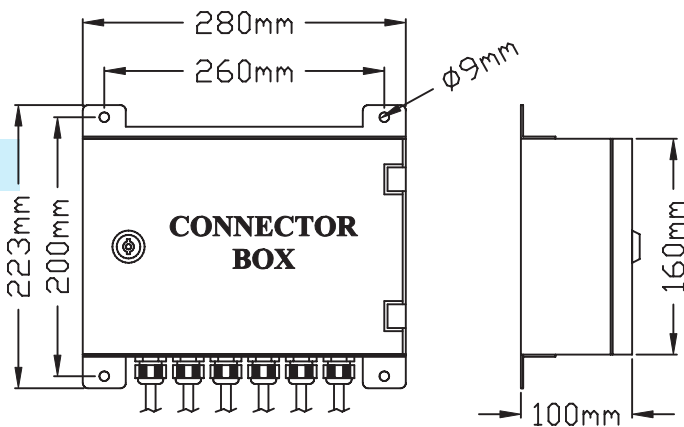


Figure-5

# AIRCRAFT WARNING LIGHT SYSTEMS

## MEDIUM INTENSITY SYSTEMS

### GUIS-03ML (AC-DC Supplied, 1 Double, 2 Single Warning Lamp+Control Box, Connector Box)

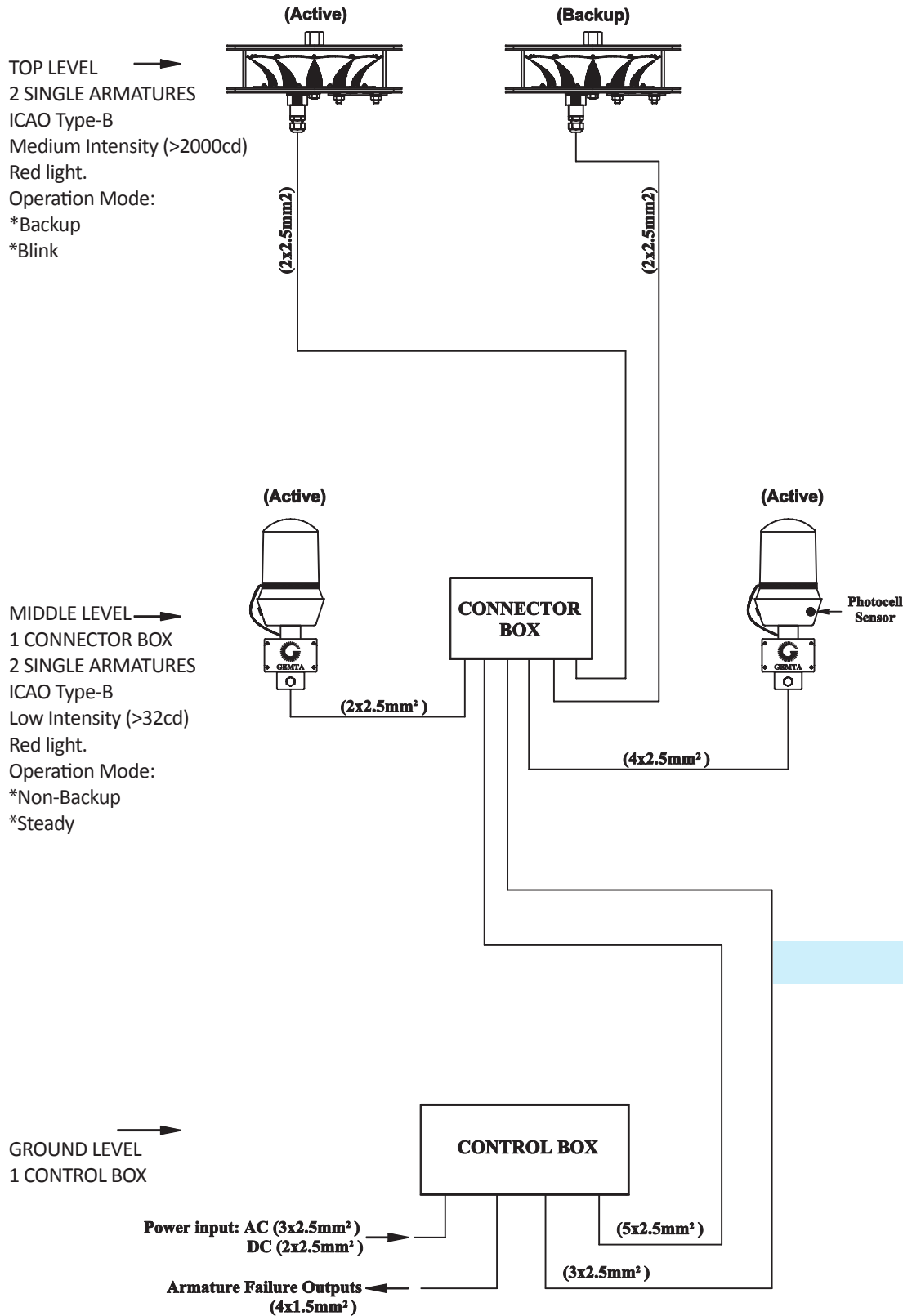


Figure-6

### WIRING DIAGRAM